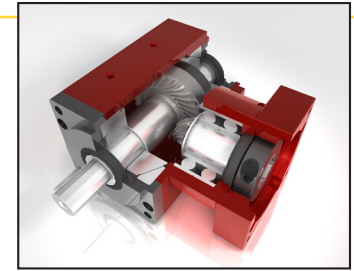
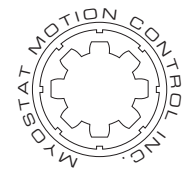




# RAAS SPECIFICATIONS

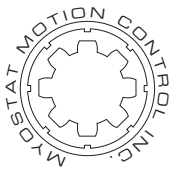


All R Series gearboxes employ helical cut bevel gears for smooth, quiet motion.

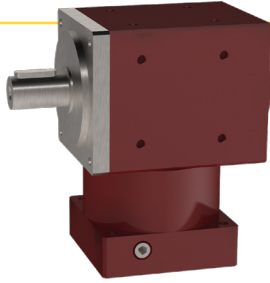
Shaft input interface uses dual bearings to increase stability during high speed operation.

Most models are available with a dual output option.

42mm Size Right Angle Gearbox			RAAS	RLAS	RAHS	RLHS	RAFS	RLFS
			RABS	RLBS	RAPS	RLPS	RADS	RLDS
DESCRIPTION	UNITS	RATIO						
Nominal Output Torque	Nm	1	9.6		9.6		9.6	
		2	8.5					
		3	6.9					
		4	5.6					
		5	5.2					
Max. Output Torque	Nm	1 to 5	Nominal Output Torque x 2					
Emergency Stop Torque	Nm	1 to 5	Nominal Output Torque x 2.5					
Nominal Input Speed	rpm	1 to 5	5000					
Max. Input Speed	rpm	1 to 5	8000					
Torsional Stiffness	Nm/ arcmin	1	1.6					
		2	1.4					
		3	1.2					
		4	0.9					
		5	0.9					
Backlash	arcmin	1 to 5	≤6					
Efficiency at Max. Load	%	1 to 5	≥95					
Weight	Kg	1 to 5	0.6	0.55	0.6	0.55	0.7	0.6
Service Life	Hours	1 to 5	20000					
Operating Temp.	C	1 to 5	-20°C to 100°C					
Lubrication		1 to 5	Lifetime Lubrication					
IP Rating		1 to 5	IP64					
Noise Level	DB	1 to 5	≤70					
Input Shaft Moment of Inertia	kgcm <sup>2</sup>	1	0.07		0.07		0.07	
		2	0.06					
		3						
		4						
		5						
Coating			Anodizing, RED					
Max. Radial Load	N	1 to 5	180	170	180	170	180	170
Max. Axial Load	N	1 to 5	90	85	90	85	150	300



# RAAS SPECIFICATIONS

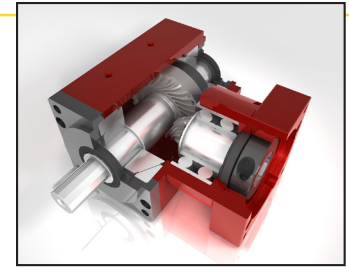
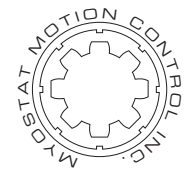


A unique wear resistance treatment is applied to the bevel gears to ensure a long life with minimal wear.

Double high quality taper bearings on the output increase both radial and axial loading capability.

60mm Size Right Angle Gearbox			RAAS	RLAS	RAHS	RLHS	RAFS	RLFS
			RABS	RLBS	RAPS	RLPS	RADS	RLDS
DESCRIPTION	UNITS	RATIO						
Nominal Output Torque	Nm	1	25.5		25.5		25.5	
		2	24.6					
		3	21.3					
		4	20.4					
		5	18					
Max. Output Torque	Nm	1 to 5	Nominal Output Torque x 2					
Emergency Stop Torque	Nm	1 to 5	Nominal Output Torque x 2.5					
Nominal Input Speed	rpm	1 to 5	4000					
Max. Input Speed	rpm	1 to 5	6000					
Torsional Stiffness	Nm/ arcmin	1	4.3					
		2	4.1					
		3	3.6					
		4	3.4					
		5	3.0					
Backlash	arcmin	1 to 5	≤6					
Efficiency at Max. Load	%	1 to 5	≥95					
Weight	Kg	1 to 5	1.9	1.7	1.9	1.9	2.1	1.9
Service Life	Hours	1 to 5	20000					
Operating Temp.	C	1 to 5	-20°C to 100°C					
Lubrication		1 to 5	Lifetime Lubrication					
IP Rating		1 to 5	IP64					
Noise Level	DB	1 to 5	≤70					
Input Shaft Moment of Inertia	kgcm <sup>2</sup>	1	0.36		0.36		0.36	
		2	0.23					
		3	0.21					
		4	0.21					
		5	0.20					
Coating			Anodizing, RED					
Max. Radial Load	N	1 to 5	1630	1270	1630	1270	1470	1250
Max. Axial Load	N	1 to 5	815	635	815	635	735	625

# RAAS SPECIFICATIONS



All R Series gearboxes employ helical cut bevel gears for smooth, quiet motion.

Shaft input interface uses dual bearings to increase stability during high speed operation.

Most models are available with a dual output option.

90mm Size Right Angle Gearbox			RAAS	RLAS	RAHS	RLHS	RAFS	RLFS
			RABS	RLBS	RAPS	RLPS	RADS	RLDS
DESCRIPTION	UNITS	RATIO						
Nominal Output Torque	Nm	1	73		73		73	
		2	69.7					
		3	54.4					
		4	49.4					
		5	47.8					
Max. Output Torque	Nm	1 to 5	Nominal Output Torque x 2					
Emergency Stop Torque	Nm	1 to 5	Nominal Output Torque x 2.5					
Nominal Input Speed	Rpm	1 to 5	4000					
Max. Input Speed	Rpm	1 to 5	6000					
Torsional Stiffness	Nm/ arcmin	1	12.2					
		2	11.1					
		3	9.1					
		4	8.2					
		5	8					
Backlash	arcmin	1 to 5	≤6					
Efficiency at Max. Load	%	1 to 5	≥95					
Weight	Kg	1 to 5	6.2	5.6	6	5.4	6.4	5.7
Service Life	Hours	1 to 5	20000					
Operating Temp.	C	1 to 5	-20°C to 100°C					
Lubrication		1 to 5	Lifetime Lubrication					
IP Rating		1 to 5	IP64					
Noise Level	DB	1 to 5	≤75					
Input Shaft Moment of Inertia	kgcm <sup>2</sup>	1	1.19		1.91		1.91	
		2	0.9					
		3						
		4						
		5						
Coating			Anodizing, RED					
Max. Radial Load	N	1 to 5	3440	2690	3440	2690	3440	2690
Max. Axial Load	N	1 to 5	1720	1345	1720	1345	1435	1225